

Infrastructure Data Management System

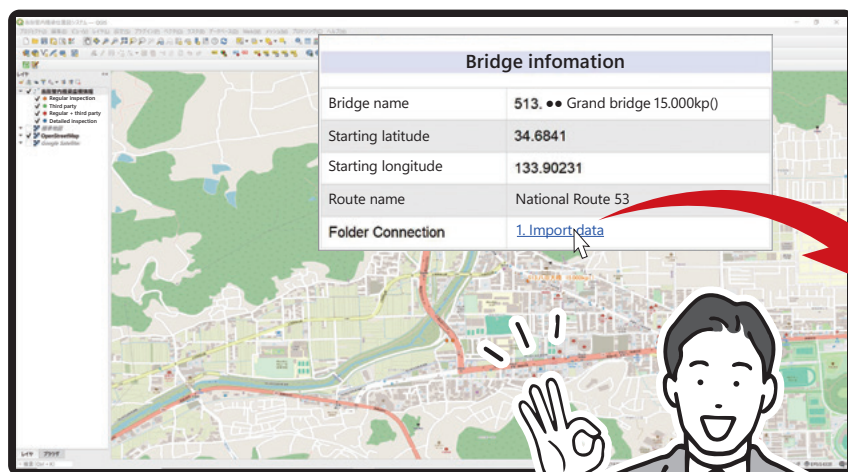
inMap

This system combines infrastructure data and maps for management. It's easy and quick to locate and confirm the relevant data on the map!

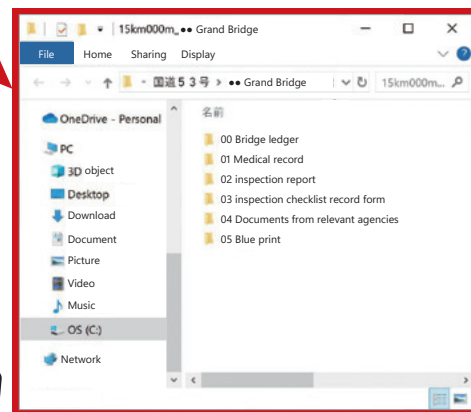
Does it take a long time to find the infrastructure data within the managed area?



With the ability to open Windows® Explorer on the map, locating related data becomes fast and simple.



- Folder structure is customizable
- Just place the new data into the folder
- Compatible with any infrastructure



- High-spec PCs are not necessary
- Map data is created using the free QGIS*
- Available for use in both cloud and local environments

* QGIS is a trademark or registered trademark in Europe and other countries.

inMap is a registered trademark of Eight-Japan Engineering Consultants Inc.

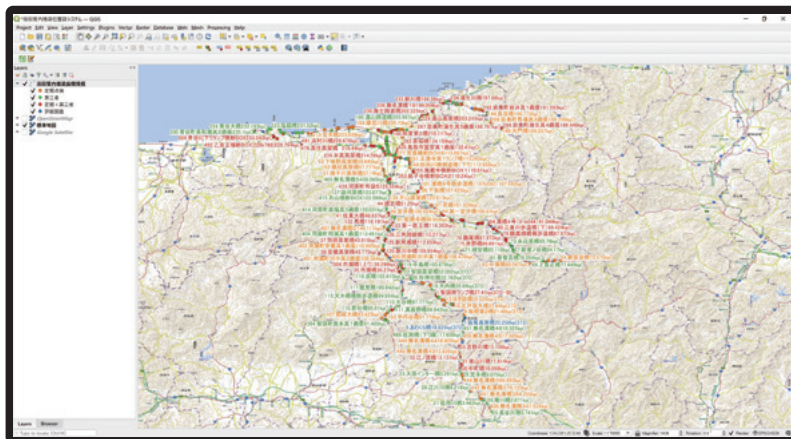
EJEC support infrastructure maintenance

The desired infrastructure can be easily located at a glance

We can view the entire infrastructure within the managed area on a map.

If we add basic information about the infrastructure, such as type, condition assessment, and importance, it can be colorcoded and displayed according to each classification.

Additionally, display items can be categorized, making it easy to locate the infrastructure and have an access to the related data instantly.



On-site verification of the specific infrastructure is also smooth and efficient

Does it take a long time to identify the specific infrastructure we are looking for during onsite inspections? (especially for consecutive similar-shaped culverts, etc.)

inMap manages infrastructure with coordinates, so if we take a laptop or tablet (Windows®) equipped with a GPS receiver (USB connection) on-site, we can smoothly navigate to the target infrastructure while viewing the map.

Of course, you can check the data on-site.



Optional Extras Street View can be explored for the desired structure

It is possible to add the 'KIMOTO360 Editor Eight-Japan Engineering Consultants Inc. Enhanced Version' software, which creates a three-dimensional space by combining spherical images captured by a 360° camera.

Using the Kimoto360 Viewer on the PC, the structure of interest can be confirmed as if we were on the site.



01116-003E

