

Eight-Japan Engineering Consultants Inc.

CORPORATE PROFILE



EJEC

Our Mission

Connecting Valuable Environments to the Future





Healthy Earth, thriving societies, and inspiring daily lives.
People live amidst environments that generate diverse values.
Our mission, as stewards of social infrastructure, is to cherish and protect these elements, breathe new life into them, and seamlessly connect them to the future.
Through the power of technology and creativity, we continuously strive to achieve an ideal relationship between humanity and nature.



BUSINESS FIELDS



Disaster Prevention & Mitigation



Transportation & Road Infrastructure



Water Management Infrastructure



Bridge Engineering



Urban Planning & Design



Geological Disaster Prevention



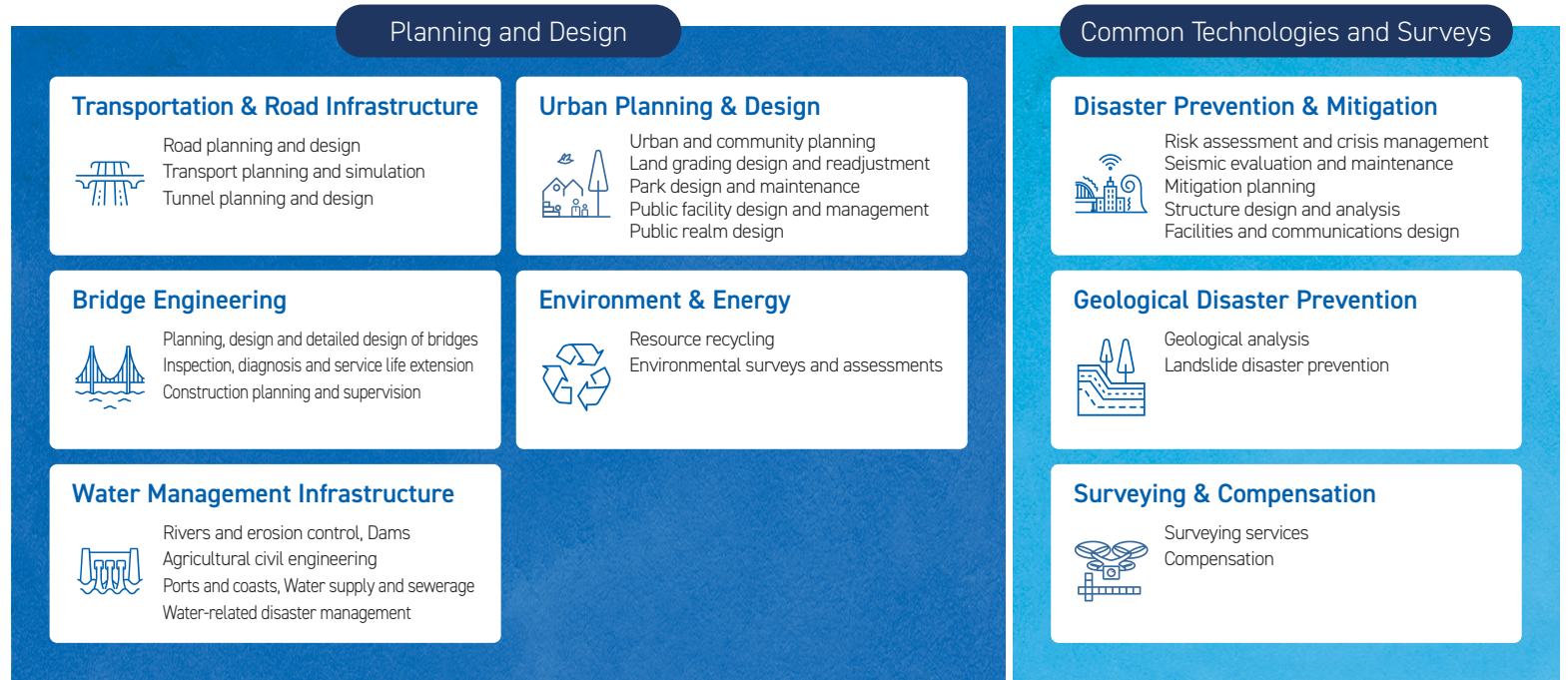
Environment & Energy



Surveying & Compensation

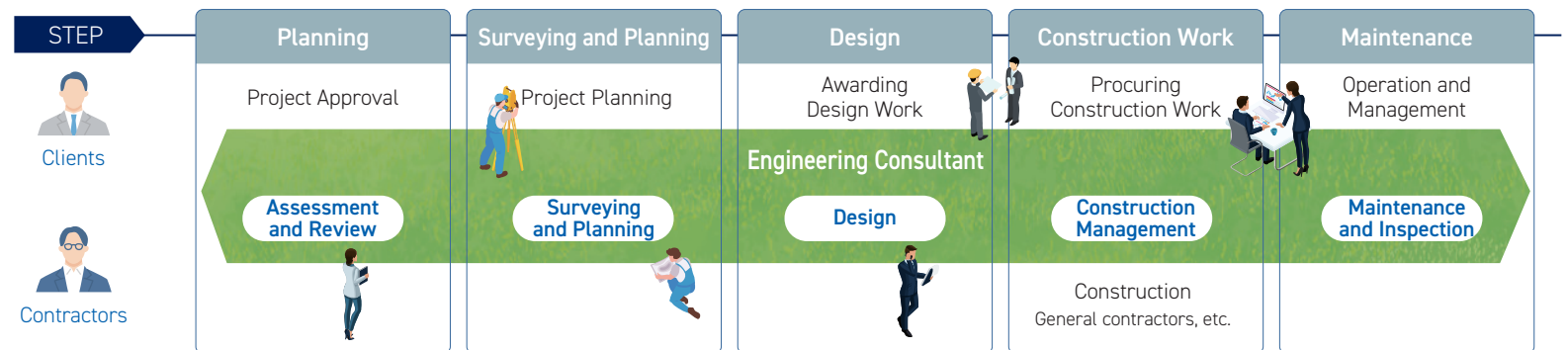


Eight-Japan Engineering Consultants Inc. is a general construction consulting firm. Drawing on management expertise developed over many years in areas such as **environmental engineering** , **disaster prevention and mitigation** , and **administrative support** , we collaborate with a wide range of engineers to address social challenges.



What is an Engineering Consultant?

We are a team of specialists engaged in infrastructure development, community development, and disaster prevention planning to support daily life. Leveraging our expertise and technologies, we serve as a partner to our clients—including national and local governments and private companies—providing services from planning through maintenance. General contractors and manufacturers carry out construction work based on designs developed by our engineering consultants.



TRANSPORTATION & ROAD INFRASTRUCTURE

Advancing transportation infrastructure.

We connect cities and people through a wide range of functions—including information and communications, driver assistance, and disaster prevention and mitigation—to create a thriving and convenient society.





Road Planning and Design

In road engineering, we aim to create a safe and comfortable traffic environment for all, while always prioritising the lives of local residents.



Pedestrianisation design for the approach to Hikawa Shrine in Saitama (Saitama Prefecture)

Transport Planning and Simulation

We analyse the movement of people and vehicles, forecast and evaluate future conditions, and recommend safe, secure, convenient, and comfortable transportation environments.



Autonomous driving and Green Slow Mobility on narrow streets in Taiji Town (Wakayama Prefecture)

Tunnel Planning and Design

We design and maintain safe and comfortable road facilities that function as vital infrastructure connecting cities, in harmony with the natural environment and living spaces.



Futae-no-toge Mountain Pass Tunnel (Kumamoto Prefecture)



PPP initiative to accelerate the Sanriku Coastal Road Project (Iwate Prefecture)



Visualisation of traffic congestion and simulation of countermeasures



Shin Isotake Tunnel (Shimane Prefecture)

BRIDGE ENGINEERING

Expanding the possibilities of space.

We pursue optimal solutions to complex challenges, considering durability, constructability, maintainability, and care for people and the natural environment.



Futami Bridge (Ehime Prefecture)



Kohoku Junction (Kanagawa Prefecture)



Otagawa-Ohashi Bridge (Hiroshima Prefecture)



Yodogawa-Ohashi Bridge (Osaka Prefecture)



Bridge Planning and Design

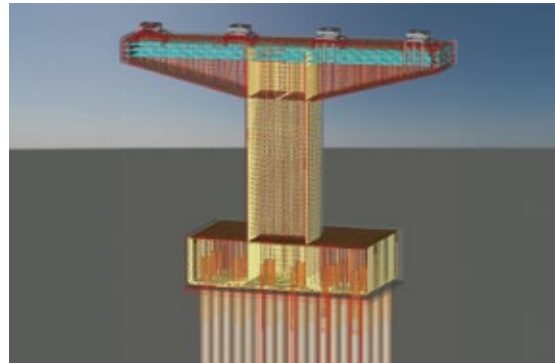
Bridge design begins with understanding nature. Through a dialogue with the natural environment, we pursue optimal designs that allow our bridges to become part of the landscape and remain cherished for generations to come.



Sakurakobashi Footbridge (Tokyo)

Detailed Design

To clearly communicate the intent of plans and designs to contractors, we conduct design calculations, structural analysis, material selection, and detailed design, and prepare comprehensive drawings utilising 3D models.



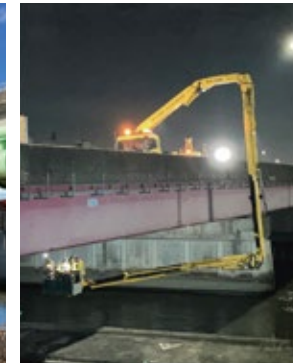
3D rebar arrangement drawing of a bridge pier

Inspection, Diagnosis and Service Life Extension

We assess infrastructure conditions through inspection and diagnosis, and propose targeted repair and strengthening measures to enable preventive maintenance and extend service life.



Drone-based inspection



Inspection using an under-bridge inspection vehicle

Construction Planning and Supervision

We develop efficient and feasible construction sequences, coordinate with stakeholders, and manage progress, drawing on experience and ingenuity.



Source: West Nippon Expressway Company Ltd. (Shikoku Branch)

Yoshinogawa Sunrise Bridge (Tokushima Prefecture)

TOPICS

Infrastructure experience for the future

To nurture future leaders, we participate in school programs and industry events. We conduct workshops for junior high students focused on topics such as bridge maintenance. For elementary students, we organise sessions on the importance of roads and bridges using quizzes and crafts. Through these activities, we aim to spark curiosity about infrastructure and inspire young minds to explore future career opportunities in engineering and related fields.

Junior high school students in Ota City learning about bridge maintenance (Tokyo)



Hands-on learning event for elementary school students and their parents (Hyogo Prefecture)

Our Thoughts

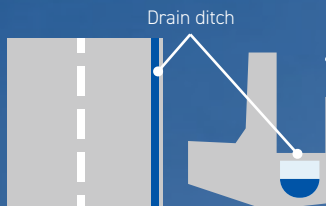
Civil infrastructure—such as bridges, roads, and water and sewer systems—is so familiar that it often goes unnoticed in daily life. Yet planning these projects requires careful consideration of environmental sustainability, public safety and accessibility, community connectivity, long-term durability, and efficient construction. Our professionals collaborate across disciplines to integrate these factors into every plan, creating infrastructure that serves its purpose while fitting seamlessly within its surroundings.



Landscape and Maintenance

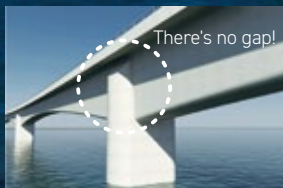
Aim for environmentally friendly and beautiful forms

It was an innovative idea to combine the drainpipe and inspection passage along the roadside.



Disaster Prevention and Mitigation

Let's build bridges that are strong enough to survive a major Nankai Trough earthquake.



Rigid connection structures can withstand various types of earthquakes and large tsunamis.

The piers and girders of the five sections in the centre of the bridge are integrated.



As this bridge is part of the Shikoku Trans-Expressway and serves as an emergency transportation route during disasters, it must be robust and durable.



Shikoku Trans-Expressway (The Shikoku "8-shaped" Network)



Scan here to learn more about our business (Japanese).



AWA ODORI

Community Development

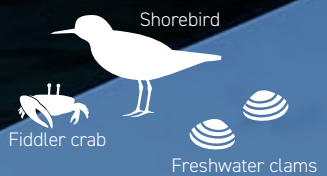
We hope this bridge will encourage people to interact and revitalise culture.

Let's practice the Awa Odori dance again today!

Environment



We need to give the utmost consideration to the nature of the tidal flats at the mouth of the river.



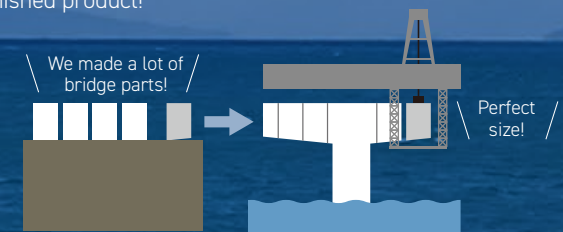
To minimise riverbed excavation work and shorten the overall construction period, we reduced the number of bridge piers by adopting longer effective spans of 130m. We also selected a bridge form that avoids interfering with bird flight paths. Instead of a suspension bridge, we opted for a lower-profile design to keep the structure's height to a minimum.

Teamwork



Delicate, high-quality work requires everyone's cooperation.

It was great that during the construction, we were able to work together and discuss ways to thoroughly check things to ensure a better finished product!

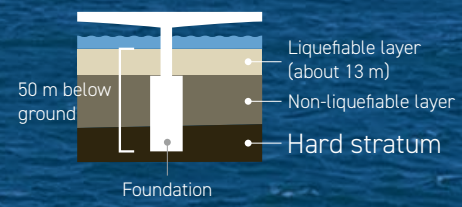


Ground and Seismic Resistance



Let's support it with a foundation 50 meters below the riverbed.

Because the ground is weak, we designed solid foundations that reach down to the hard underlying stratum.



Yoshinogawa Sunrise Bridge (Tokushima Prefecture)

15-span Prestressed Concrete (PC) box girder rigid frame bridge (bridge length 1,696.5 m)

WATER MANAGEMENT INFRASTRUCTURE

Preserving and creating healthy water environments and cycles.

Delivering comprehensive water solutions.

From rivers and ports to water supply and sewerage systems,
we support safe and sustainable daily life through water infrastructure.



Source: The Sanyo Shimibun
Widening and raising of the Suemasa River levee
that was breached due to heavy rain (Okayama Prefecture)



Tsuruga Port Container Terminal (Fukui Prefecture)



Akadani No. 1 Sabo Dam,
stream channel conservation work (Nara Prefecture)



Detailed design of Idoshita Sluice Gate
(Miyagi Prefecture)



Rivers and Erosion Control

We protect lives and property from floods and landslides. We also preserve and foster coexistence between people and the natural environment, while maintaining and creating connections with rivers.



Daijizawa No. 1 Sabo Dam (Tochigi Prefecture)

Dams

From dam surveys and design through to ongoing maintenance, we deliver meticulous support and advanced technologies to efficiently maintain and enhance dam functions at the highest level.



Rendering of Harudo Dam No. 1 upon completion (Kochi Prefecture)

Agricultural Engineering

We help create safe and prosperous rural environments through agricultural and rural development that supports food production and revitalises local communities.



Farm field improvement planning (Okayama Prefecture)

Ports and Coasts

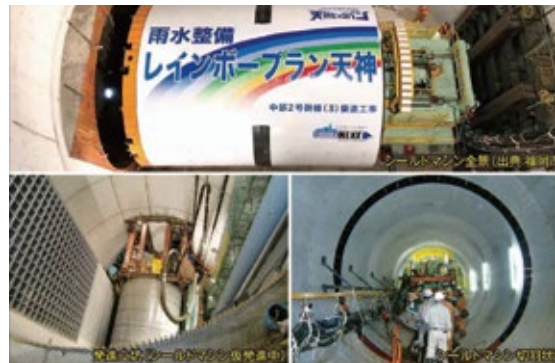
Aiming to ensure the safety and comfort of distribution hubs and places for public use, we carry out planning and design by making full use of analyses and predictions of complex tsunami and wave behaviour, as well as earthquake response analysis.



Nakanoshima GATE South Pier (Osaka Prefecture)

Water Supply and Sewerage

We provide comprehensive support for water supply and sewerage facilities, from planning through operation and maintenance, and create proposals that look ahead to our communities' future 20 to 30 years from now.



Detailed design of Chubu No. 2 main storm sewer line (Fukuoka Prefecture)

Water Related Disaster Prevention

We comprehensively analyse the complex behaviour of water, ground, and structures, and apply the results to the planning of water-related measures and community development.



Examination of water resistance (inundation simulation) at Asahikawa City Sewage Treatment Center (Hokkaido)

URBAN PLANNING & DESIGN

Community development that preserves history and culture, and lives in harmony with nature. Through diverse approaches, we design the future of communities and regions.





Urban and Community Planning

In response to social change and evolving needs, we help create safe and sustainable communities through disaster prevention, resilience planning, and urban and public transportation restructuring.



Community development project in Matsumoto City (Nagano Prefecture)

Land Grading Design and Readjustment

By developing new urban areas and restructuring existing ones, we build the foundations for vibrant communities and economic activity, unlocking land potential through advanced technical expertise.



Rare large-scale new urban development in Northern Minoo (Osaka Prefecture)

Park Design and Maintenance

From regional and sports parks to station plazas, we aim to create green, inviting spaces that balance user convenience with efficient operation and management.



Design of Takata-Matsubara Athletic Park (Iwate Prefecture)

Architectural Design

Our work spans urban spaces such as stations and plazas, civil infrastructure including roads and rivers, and public facilities such as government and educational buildings. From concept through construction supervision, we address diverse needs at every stage.



Nursery schools in Akaiwa City (Okayama Prefecture)

Public Facilities Management

To support sustainable development and operations, we leverage a range of approaches, including PPP/PFI, to assist public authorities across the entire project lifecycle from initial concept to ongoing operations.



Ozu Municipal Nagahama Junior High School (Ehime Prefecture)

Public Realm Design

Through an inclusive approach, we create beautiful, user-friendly spaces where everyone can feel comfortable.



Okayama Station (Okayama Prefecture)

Kofu Station (Yamanashi Prefecture)

ENVIRONMENT & ENERGY

From waste management, wastewater treatment, and disaster waste management to coexistence with nature and decarbonisation.

We understand the characteristics of each region to promote sustainable and prosperous communities for the future.





Resource Recycling

To pass limited resources on to future generations, we promote waste treatment and recycling to help realise a circular society. As a team of specialists in waste management, we support our clients by formulating treatment plans and providing advisory services on facility development,



Nishi Iburi Eco Factory - refuse incineration facility (Hokkaido)



Minuma Environmental Centre - waste incineration and recycling facility (Saitama Prefecture)



Chuo Waste Treatment Centre (Akita Prefecture)

Environmental Surveys and Assessments

We tackle environmental challenges through multifaceted approaches, including environmental assessments, environmental surveys, and biodiversity conservation planning. In recent years, we have introduced new services to support a decarbonised society in harmony with nature, such as assistance with blue carbon crediting and certification for Nature Coexistence Sites (OECMs). We also conduct environmental surveys and assessments for waste treatment facilities operated by overseas governments and private-sector entities.



Observation of northern goshawks breeding in artificial nests using an IoT camera (Yamanashi Prefecture)



Fish habitat survey using AI image analysis (Okayama Prefecture)



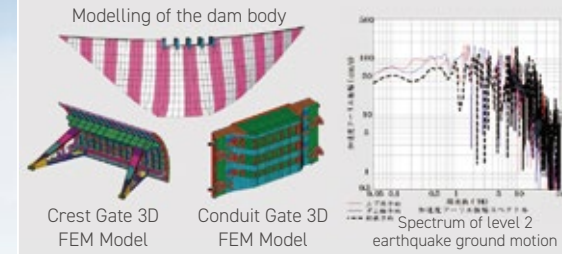
Environmental education at high schools (Okayama Prefecture)

DISASTER PREVENTION & MITIGATION

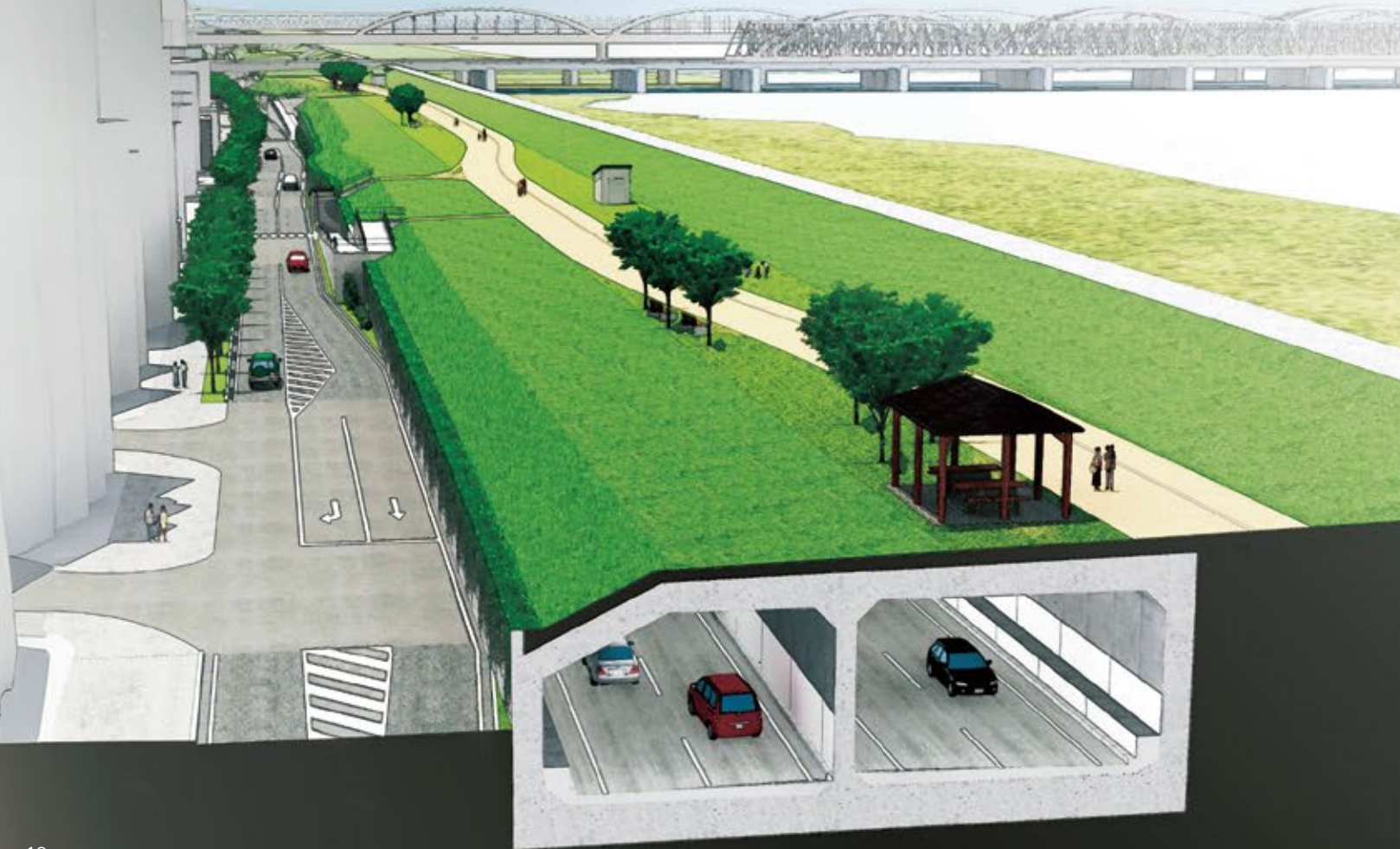
Protecting lives from natural disasters including earthquakes, floods, and volcanic ash fall. From observation, analysis, and design to disaster prevention planning and education, we provide integrated support backed by extensive experience and specialised expertise to help build a resilient nation.



Inspection of aseismic performance at Yahagi Dam (Aichi Prefecture)



Microtremor observations for developing design seismic ground motions



Yodogawa-Sagan Route (Phase 2): Cut-and-cover tunnel section (Osaka Prefecture)



Risk Assessment and Crisis Management

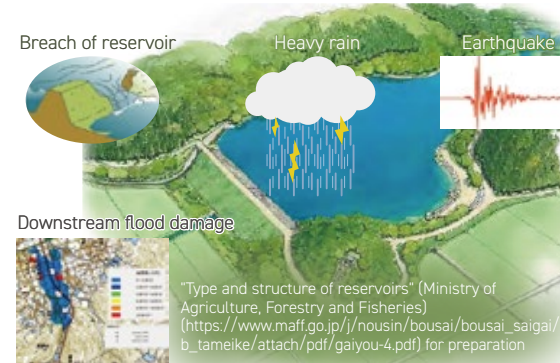
By analysing disaster risks and assessing the impacts of complex events, our specialists support region-specific measures from mitigation and preparedness to recovery planning and disaster prevention education.



Tabletop exercise simulating disasters conducted by local governments

Seismic Assessment, Maintenance Evaluation, and Mitigation Planning

In preparation for large-scale earthquakes, we provide solutions to protect lives and infrastructure through integrity assessments and safety evaluations of earth and concrete structures, seismic reinforcement, and service life extension.



Risk assessment of priority disaster-prevention reservoirs for heavy rain and earthquakes (Okayama Model)

Analysis and Design of Ground and Underground Structures

Building on advanced analysis of ground conditions and structures, we deliver integrated solutions for soft ground improvement and underground and earth structures, providing practical, high-value outcomes.



Ramp section box culvert structure at Kohoku Junction, Metropolitan Expressway (Kanagawa Prefecture)

Facilities and Communications Planning and Design

Communication systems play a critical role in disaster information delivery. By integrating monitoring, warning, lighting, and sensing technologies into planning and design, we help ensure highly reliable facility operations.



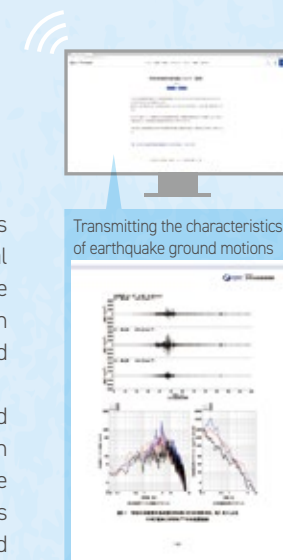
Asahikawa Dam Discharge Warning Station (Akita Prefecture)

TOPICS

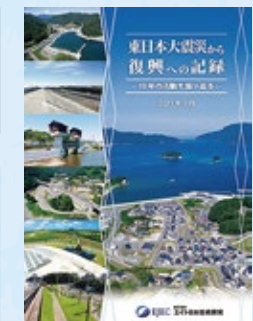
Information Transmission in the Event of an Earthquake

When earthquakes occur, we analyse seismic characteristics and disseminate information online to support rapid situational awareness and effective response. In addition, we disclose the results of disaster surveys and records of reconstruction projects to contribute to the formulation of rehabilitation and reconstruction plans.

These information-sharing initiatives have been recognised as a social contribution, earning us the Resilience Certification (Business Continuity and Social Contribution). We have established a robust framework that enables continuous operations during disasters and supports early recovery and reconstruction efforts.



Records of reconstruction activities



GEOLOGICAL DISASTER PREVENTION

Professionals in geology and disaster prevention. We address geological risks from the perspectives of disaster prevention and environmental conservation, contributing to the development of safe, secure, and sustainable social infrastructure.



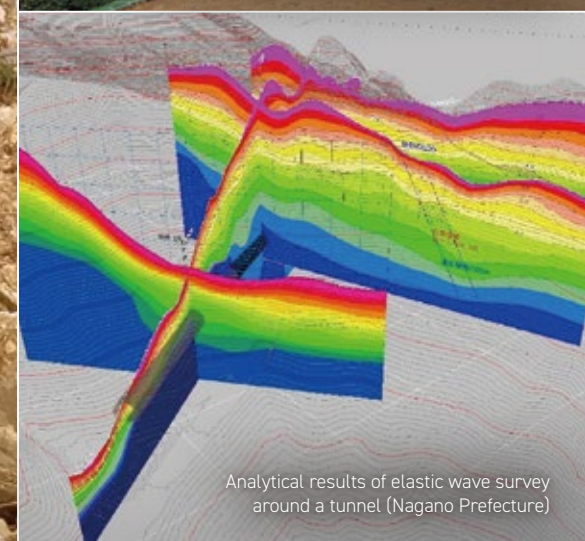
Monitoring the Ichinose landslide caused by the 2024 Noto Peninsula Earthquake (Ishikawa Prefecture)



Groundwater contamination analysis in Kamisu City using 3D advection dispersion analysis (Ibaraki Prefecture)



National Route 173 landslide countermeasure design work in Ohara District (Kyoto Prefecture)



Analytical results of elastic wave survey around a tunnel (Nagano Prefecture)



Geological Environment

We eliminate concerns regarding geological risks, including groundwater and soil contamination and landslides. By applying cutting-edge technologies and scientific approaches, we provide optimal solutions and contribute to the realisation of a sustainable society.



Landslide monitoring (Okayama Prefecture)

Landslide Disaster Prevention

We protect communities and everyday life from increasingly severe natural disasters. Backed by advanced technologies and proven expertise, disaster prevention professionals strongly support the creation of a safe and resilient society—ensuring full preparedness for the future.

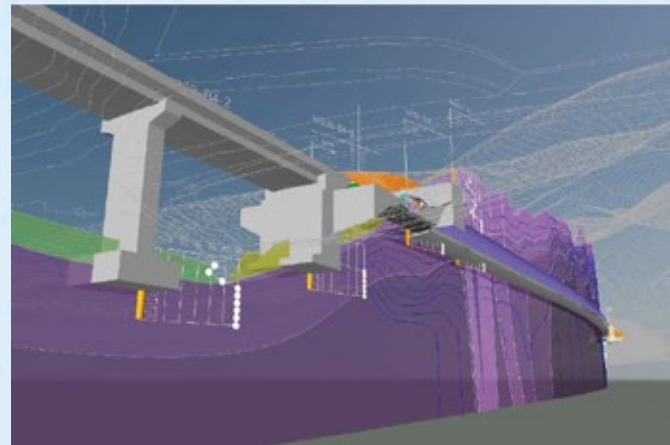


Rockfall source investigation (Okayama Prefecture)

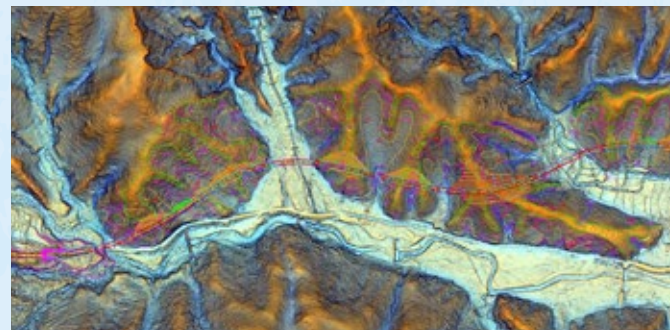
TOPICS

3D Geotechnical Analysis

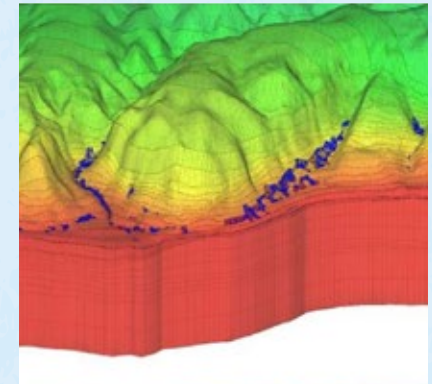
We visualise geological and geotechnical risks through advanced geotechnical analyses using 3D geological and topographic models, contributing to safer and more efficient infrastructure development.



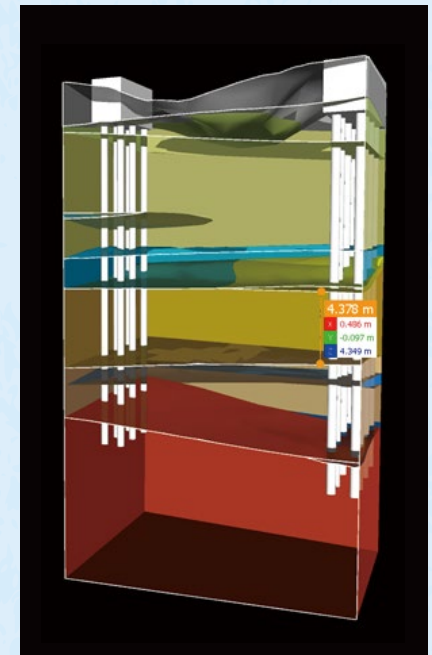
Quasi-3D ground model of a bridge-tunnel planning section (Yamaguchi Prefecture)



Geomorphological interpretation using micro-topographic analysis map (Kochi Prefecture)



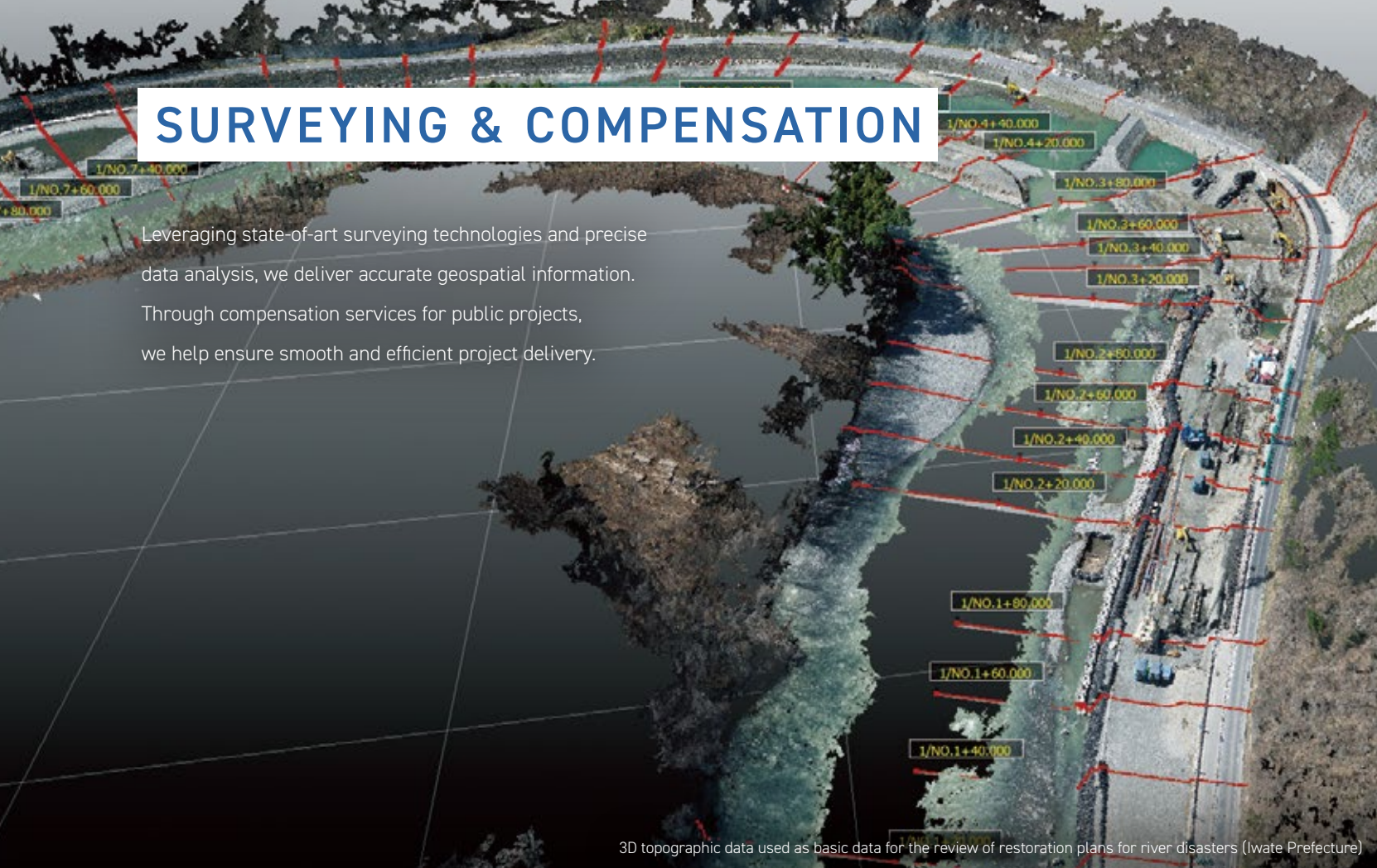
3D seepage analysis (Kagoshima Prefecture)



3D model of bridge foundation ground (Kyoto Prefecture)

SURVEYING & COMPENSATION

Leveraging state-of-art surveying technologies and precise data analysis, we deliver accurate geospatial information. Through compensation services for public projects, we help ensure smooth and efficient project delivery.



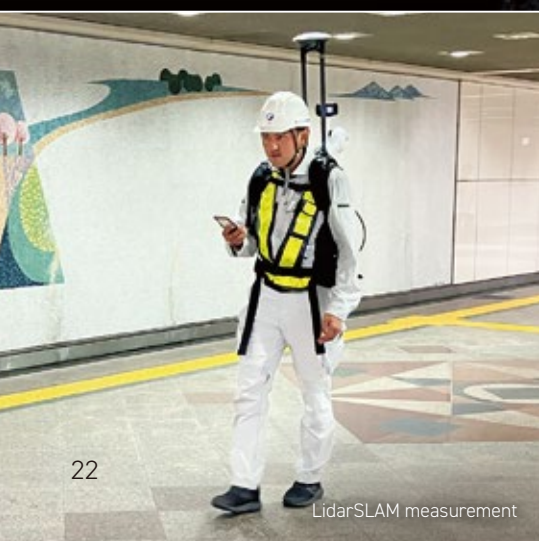
3D topographic data used as basic data for the review of restoration plans for river disasters (Iwate Prefecture)



Publicly funded demolition survey



Remote boundary confirmation using a wearable camera



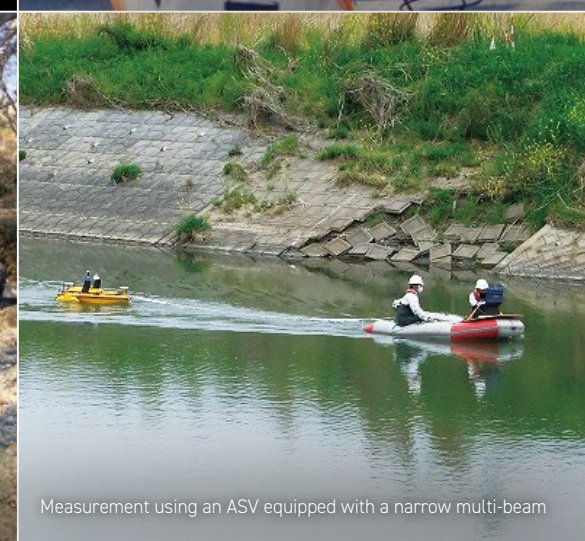
LidarSLAM measurement



UAV laser surveying



Terrestrial laser scanning



Measurement using an ASV equipped with a narrow multi-beam

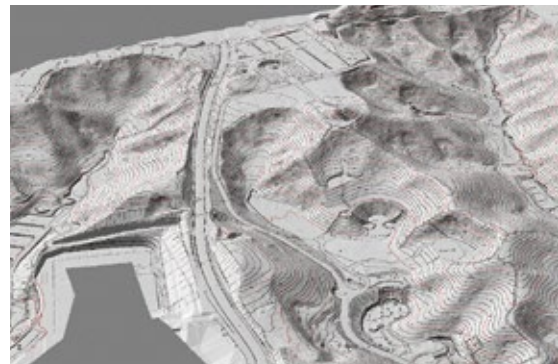


Surveying Services

We offer a full range of surveying services, including 3D measurement, control point, topographic, and applied surveying (land acquisition surveys). By integrating advanced measurement technologies and multiple instruments, we safely and efficiently capture high-precision data and deliver accurate 3D spatial information with speed and reliability.



3D measurement data obtained by laser scanning



3D topographical map prepared by removing tree and building information from laser scanning data

Compensation

We provide comprehensive support for compensation related to land acquisition and implementation of public works projects. Drawing on expertise across all eight compensation divisions—land surveying, land appraisal, property, machinery and equipment, business and special compensation, business loss, compensation-related matters, and general compensation—we assist in the strategic and planned acquisition of project land.



Explanation of land compensation, negotiation over land acquisition



Remote boundary confirmation to reduce the burden on the elderly or landowners in remote locations

TOPICS

Disaster Reconstruction Support Services

In addition to topographic surveying of disaster-affected areas and flood trace investigations, we also conduct publicly funded demolition surveys during disasters. To ensure proper operation of the publicly funded demolition system and facilitate smooth dismantling of damaged houses, we work closely with local governments and demolition contractors to assess both the disaster impact—including surrounding environments—and post-demolition



Surveying for disaster restoration of town roads (Ishikawa Prefecture)



Publicly funded demolition survey (Ishikawa Prefecture)

INTERNATIONAL CONSULTING

Trust Cultivated Through International Projects

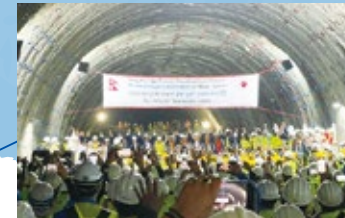
We address the growing and diverse needs of ODA and contribute to international cooperation by leveraging our technologies, always considering the perspective of the recipient countries.



Turkey-Syria Earthquake:
Damage Assessment (Turkey)



Strengthening operational capacity of
water utilities (Tajikistan)



Opening ceremony of Nagdhunga Tunnel
(Nepal)



Eco-Industrial Town Project
in Bangkok suburbs (Thailand)



Japan Freeway Extension Project
in Monrovia (Liberia)



Road planning and design
(Uganda)



Development of GNSS integrated
control station network (Cambodia)



Roads



Road planning and infrastructure design to reduce congestion (Uganda)

Bridges



Nyerere Road flyover project linking Dar es Salaam city centre with the international airport (Tanzania)

Tunnel and Geotechnical Engineering



Design, construction, and supervision of Nagdhunga Tunnel (Nepal)

Urban Planning



Proposal for the Ho Chi Minh City Central Eco-Park (Vietnam)

Disaster Prevention Planning



Formulation of a reconstruction plan following the Turkey-Syria Earthquake (Turkey)

Resource Recycling Planning



Formulation of a food waste recycling plan and system (Vietnam)

Intermediate Waste Processing Planning (Incineration Plants)



The Waste-to-Energy Plant Project within the Eco-Industrial Town near Bangkok (Thailand)

Final Disposal Site Planning



Semi-aerobic landfill project harnessing microbial power to reduce methane emissions and lessen environmental impact (Thailand)

Water Supply and Sewerage



Detailed design and construction supervision of water supply improvement plan - including construction of water supply facilities and introduction of a meter-rate system (Tajikistan)

EJ INNOVATION TECHNOLOGY CENTER

Incorporating the latest technologies to solve infrastructure challenges

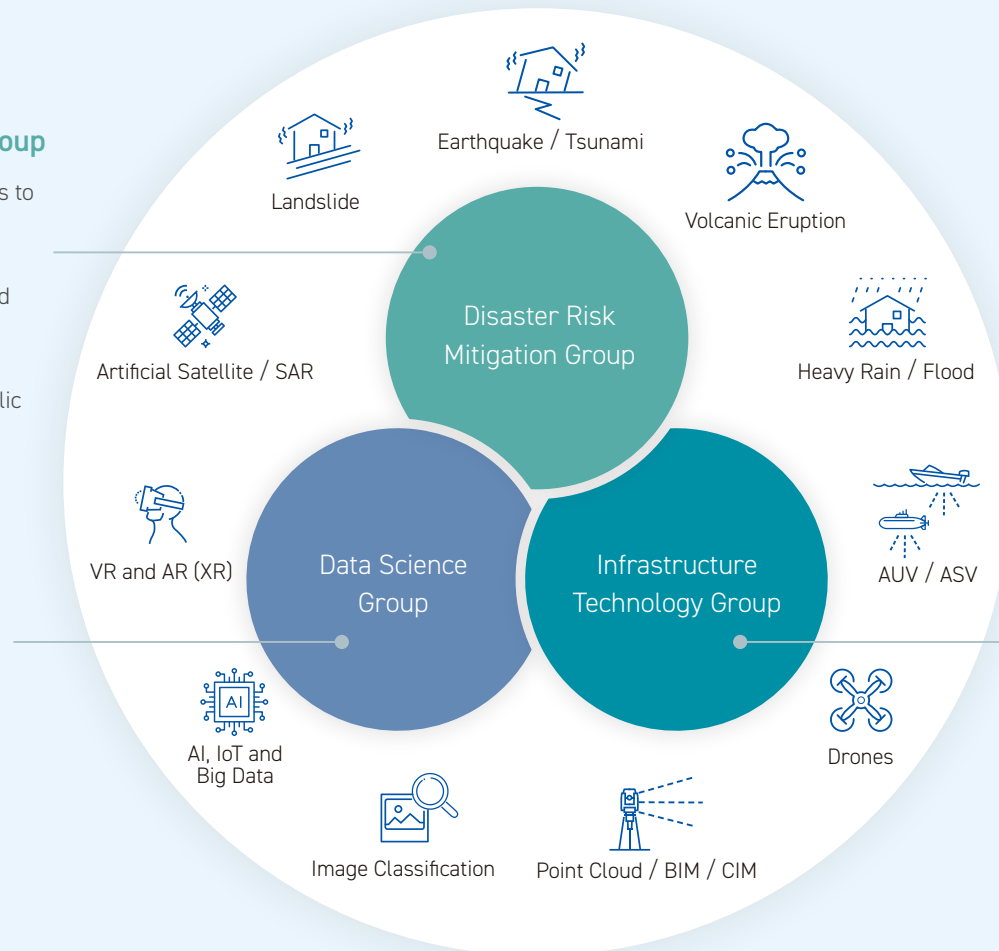
At the EJ Innovation Technology Center, three groups collaborate to develop advanced technologies that leverage IoT, AI, and other digital technologies to drive digital transformation in the infrastructure sector. These groups also focus on advancing and developing infrastructure technologies more broadly, including cutting-edge inspection and surveying methods.

Disaster Risk Mitigation Group

Develops technologies and solutions to evaluate natural disaster risks—including earthquakes, tsunamis, storm surges, floods, landslides, and volcanic eruptions—formulates disaster prevention plans and mitigation measures, promotes public awareness, and supports reconstruction projects.

Data Science Group

Drives infrastructure digital transformation by advancing 3D measurement technologies and developing solutions for satellite image analysis, AI-based image analysis, and XR (extended reality) visualisation.



In the event of a disaster, the EJ Innovation Technology Center engages not only in rehabilitation and reconstruction, but also conducts and publishes disaster surveys. We hope this will contribute to the advancement of civil infrastructure technologies.

Infrastructure Technology Group

Develops solution technologies to enhance and streamline survey and inspection methods across all technical fields related to the development and maintenance of infrastructure facilities.

NEW BUSINESS DEVELOPMENT

Business Management Aimed at Solving Regional Issues

To build and sustain a sustainable society, our company develops, invests in, and manages new businesses focused on social infrastructure, while providing advisory services to drive regional revitalisation.

Three Fields Connecting the Future, People, and the Environment

Regional Revitalization and Public Management

A Field that Fosters Regional Lifestyles



Designated Management Business

We manage and operate public facilities on behalf of local authorities, thereby enhancing civic services for the community.

Public-Private Partnership Initiatives

Utilising our work experience and ingenuity, we work with government agencies to provide advisory and implementation support for the management and operation of public facilities.

Regional Revitalisation Projects

To vitalise the local economy and social activities and enhance the quality of life, we are undertaking various initiatives through public-private partnerships.

Agriculture and Forestry

A Field that Supports Japanese Industries



Agricultural Production Area Initiatives

Through our farming support initiatives that apply know-how from our strawberry production and marketing, we are working to establish new agricultural production regions and expand market access.

Project to Make Forestry a "6th Industry"

To support the revitalisation and development of mountainous and rural areas, we are developing business models such as the manufacture and sale of high-value-added wood products utilising abundant forest resources.

Tourism and Infrastructure Management

A Field that Connects Future Tourism and Transport



Tourist Facilities Management Business

Together with our toll road management activities, we are active in the operation of parking lots and rest areas, as well as event planning.

Toll Road Management Business

Beyond road planning and design consulting, we also serve as the operating entity for toll roads, actively managing their business operations.

MESSAGE

Expanding our Role in Society

For 70 years since its founding, Eight-Japan Engineering Consultants Inc. (EJEC) has provided advanced technologies to protect the global environment, preserve national land, and develop regional infrastructure, fulfilling its social responsibility to ensure safety and security. Our mission is to deliver lasting value to all stakeholders and pass on a sustainable environment for the future—this has always been, and will continue to be, EJEC's unwavering role in society. EJEC actively pursues digital transformation (DX), unbound by traditional ideas, practices, or business domains, striving to create value for future generations while addressing pressing social challenges. We also aim to be a company where all employees, as key stakeholders, can embrace new ways of working that balance meaningful work with personal fulfillment. We sincerely appreciate your continued support and guidance.



Representative Director and President
KIN Seikan

Mission

Connecting Valuable Environments to the Future

Healthy Earth, thriving societies, and inspiring daily lives. People live amidst environments that generate diverse values. Our mission, as stewards of social infrastructure, is to cherish and protect these elements, breathe new life into them, and seamlessly connect them to the future. Through the power of technology and creativity, we continuously strive to achieve an ideal relationship between humanity and nature.

Vision

Transforming Every Question into Prosperity and Joy

We aspire to be a team of experts that turns every question into an opportunity to create value and bring joy. Our environments, societies, and daily lives are brimming with countless questions. By harnessing technology and creativity, we seek to resolve these questions and bring prosperity and joy to people in the community and around the world.

Values

Everything for Our Stakeholders

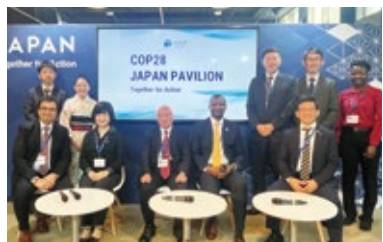
We act with full dedication for the benefit of all our stakeholders. Guided by the principles outlined in our "EJEC BEHAVIOR", this value-driven compass shapes the actions of each employee. These actions generate new value and help realize our mission and vision.

ESG

Efforts for a Sustainable Future

Involvement in International Climate Change Measures

We participated in the 28th Conference of the Parties to the United Nations Framework Convention on Climate Change (COP28) held in Dubai, United Arab Emirates (UAE). At the Japan Pavilion, our team presented on the implementation of semi-aerobic landfill structures using the "Fukuoka method", highlighting its contributions to reducing methane emissions and improving the environment. At COP29, we focused on our waste management consulting services and the development of products utilizing wood powder.



Participation in the CDP (Carbon Disclosure Project) Program

Our parent company, E.J. Holdings, has established CO₂ reduction targets certified by the Science Based Targets (SBT) initiative and actively discloses the risks and opportunities of climate change. We are promoting initiatives such as installing energy-efficient appliances in each office and signing power contracts with 100% renewable energy.

Participation in the 30by30 Alliance for Biodiversity

We are a member of the 30by30 Alliance for Biodiversity, working to promote OECM by expanding protected areas, supporting their management, and providing information. It is expected that this will allow us to contribute to the conservation of biodiversity and to utilize our existing technologies and create new business areas.



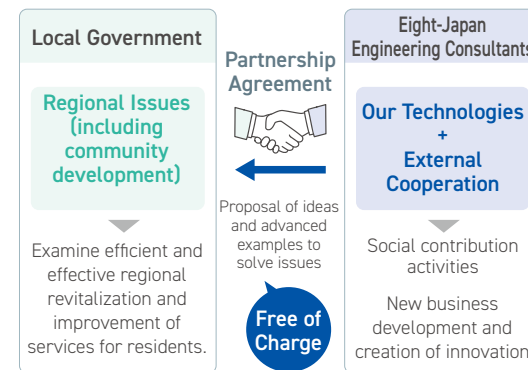
Support for Resolving Complex and Interconnected Regional Challenges

- Partnership Agreements with Local Governments -

Against the backdrop of depopulation, declining birthrates, an aging population, and increasingly diverse and sophisticated resident needs, the challenges facing local governments have become highly complex and multifaceted. Single measures are rarely sufficient, as multiple interconnected factors interact and reinforce one another.

In response, we have concluded technical collaboration agreements with local public entities. Leveraging our expertise and extensive networks, we provide information, share best-practice case studies, and support solutions for issues related to public facilities, natural and cultural assets, and town/community development.

Since many of these challenges cannot be adequately addressed through the expertise of construction consulting alone, we actively pursue open innovation. By partnering with companies from other sectors, universities, and research institutions, we work together to create new value.



Career Development Support for Future Leaders

We provide our employees with education and training tailored to their careers paths and offer an environment that continuously supports skill development.

Our support program begins with basic business training, and progresses to advanced courses that strengthen management and human development capabilities.

We also operate the EJ Academy, where young to mid-level employees can systematically learn both fundamental and applied technologies. The training programs cover a wide range of topics, including review of university undergraduate lectures, specialized content at the graduate school level, common themes such as data science and AI, and national land policies.



CORPORATE INFORMATION

Scan here to learn more about our profile



Trade Name	Eight-Japan Engineering Consultants Inc.
Representatives	Representative Director and Chairperson: KOTANI Yuji Representative Director and President: KIN Seikan
Corporate Headquarters	Tsushima-Kyomachi 3-1-21, Kita-ku, Okayama City, Okayama, Japan 700-8617 TEL. 086-252-8917 FAX. 086-252-7509
Tokyo Headquarters	Nakano 2-24-11, Nakano-ku, Tokyo, Japan 164-8601 TEL. 03-5341-5152 FAX. 03-5385-8500
History	1st March 1955 (Founded) 31st May 1957 (Established) 1st June 2009 (Reorganized through Merger)
Capital	JPY 2,056,880,000

Eight-Japan Engineering Consultants Inc. is an affiliated company of E.J Holdings Co., Ltd. (Tokyo Stock Exchange Prime Market).

■ Registered Businesses

Registered Construction Consultant / Registered Geological Surveyor / Registered Surveyor / Registered First Class Architect Office / Registered Compensation Consultant / Registered Instrumentation and Certification Business Sound Pressure Level, Vibration Acceleration Level / Registered Designated Investigation Institution under the Soil Contamination Countermeasures Act / Construction Company Permit

■ Registered Construction Consultant

Rivers, Erosion control, Coasts and Ocean / Ports and Airports / Roads / Railways / Water Supply and Industrial Water Supply / Sewerage / Agricultural Engineering / Forest Engineering / Fisheries Engineering / Waste / Landscaping / Urban and Regional Planning / Geology / Soil and Foundations / Steel Structures and Concrete / Tunnels / Construction Plans, Construction Equipment and Cost Estimation / Construction Environment / Electrical and Electronics

■ Registered Compensation Consultant

Land surveying / Land Appraisal / Properties / Machine Works / Compensation for Business and Special / Compensation / Business Loss / Compensation-related Matters / General Compensation

■ International Standards

ISO9001 certified and registered
ISO14001 certified and registered (Environment and Biodiversity Field of Tokyo Regional Office)
ISO55001 certified and registered (Asset Management Strategy Group)
ISO27001 certified and registered (Process Innovation Division)

■ Others

Resilience Certification (certification of organizations contributing to national resilience)
Eruboshi Certification (certification based on the Act on the Promotion of Women's Active Engagement in Professional Life) 3rd Stage
Kurumin Certification (certified under the Act on Advancement of Measures to Support Raising Next-Generation Children)
River Basin Flood Control Official Supporter Certified by the Ministry of Land, Infrastructure, Transport and Tourism
Registered the 30by30 Alliance by the Ministry of the Environment (support for expanding protected areas and area management)
Declaration of Decokatsu (declaration of new affluent lifestyles leading to decarbonization) by the Ministry of the Environment
Participation in the Decokatsu Support Team (public-private partnership council to realize a decarbonized society) by the Ministry of the Environment
DX Certification (excellent company certification based on the digital governance code) by the Ministry of Economy, Trade and Industry

Business Locations

In addition to our corporate headquarters, Tokyo headquarters, and regional offices, we maintain sales offices throughout Japan (from Hokkaido to Okinawa) to support our customers.



Scan here to learn more about our business locations



Training Facilities



E-J Group Forum



Training for new employees



DX Room

Nibiru, our training facility located near the Okayama Headquarters, is used for internal training programs and company wide events. The facility also includes a DX Room, which functions as a command centre for supporting on site operations and enabling responses in line with business continuity plans (BCPs) during emergencies and disasters.

Organization Chart

